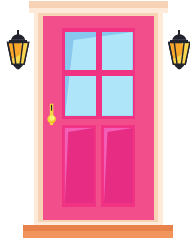


HOUSING TAX BANDS

We have made a small increase in the precept this year to include both more events and earmarking additional funds for the fitout of our community centre. The increase is 21p to 64p, depending on your specific tax band (details below).

BAND A



2024/25 = £55.63
2025/26 = £66.71
Increase = 21p/week

BAND B



2024/25 = £64.77
2025/26 = £77.66
Increase = 25p/week

BAND C



2024/25 = £73.90
2025/26 = £88.61
Increase = 28p/week

BAND D



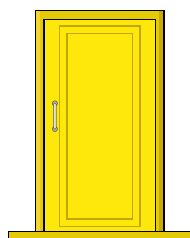
2024/25 = £83.04
2025/26 = £99.56
Increase = 32p/week

BAND E



2024/25 = £101.30
2025/26 = £121.47
Increase = 39p/week

BAND F



2024/25 = £119.57
2025/26 = £143.37
Increase = 46p/week

BAND G

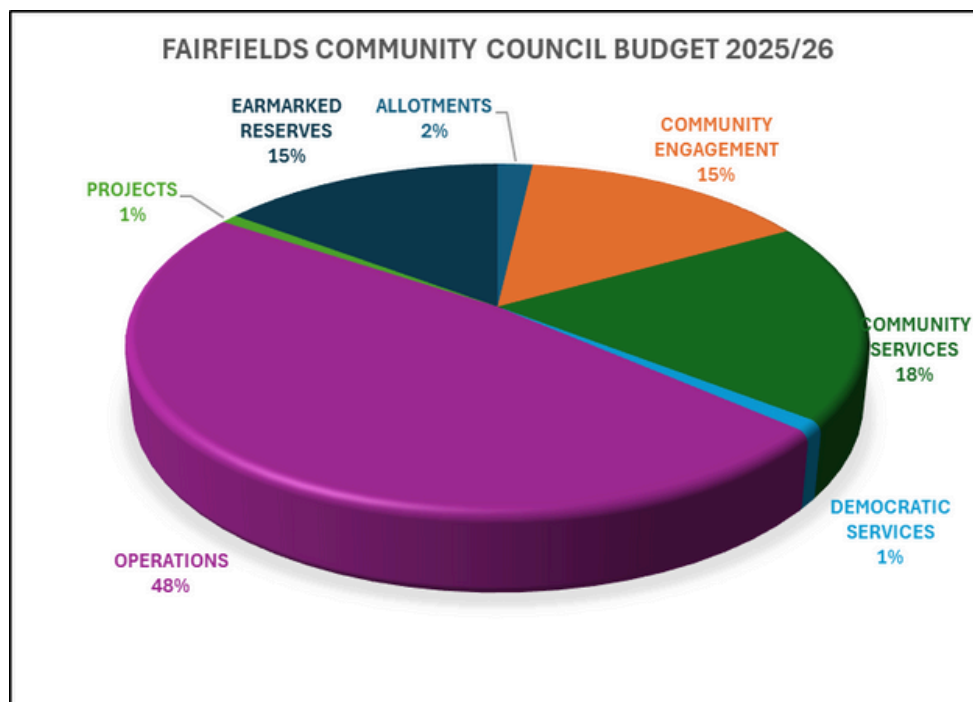


2024/25 = £138.67
2025/26 = £166.27
Increase = 53p/week

BAND H



2024/25 = £166.07
2025/26 = £199.13
Increase = 64p/week



Operations: (staff costs, training website, phone, stationary, room hire, insurance, memberships, IT, bank charges, audit, legal).

Allotments: (running costs of both sites to include landscaping, water, NAS membership, software, sundry).

Services: (bins, SIDs, grants, defib, noticeboards, CCTV (new), outreach service (new)).

Community Events: (summer play sessions, craft packs, annual event (new)).

Earmarked Reserves: (Community Building fitout).