



# FAIRFIELDS FORUM

## ISSUE 18 - SPRING 25

Litter Pick	01
Annual Residents Meet	01
Precept/Budget	02
Tax Bands	03
New Noticeboard	03
Dog Fouling	04
Parking	04
Green Bin	04
Allotments	05
Public Art	05
Events 2025	06
Updates	07
Virtual Meetings	08
Residents Group email	08



### SPRING TIME!

As days grow longer and the clocks go forward, we begin to see the first signs of spring emerging. While March marks the official start of spring, it can still be a time of unpredictable weather

#### GREAT BRITISH SPRING CLEAN

Fairfields Litter Pick Event  
Date: Sat 05 Apr 25  
Time: 10h30 to 12h00  
Place: All Hallows Play Park



#### ANNUAL RESIDENTS MEETING!

Date: Thur 22 May 25  
Time: 19h00-20h30  
Place: The Sports Hub, Apollo Avenue

*Details to follow!*

*If there is anything you would like us to raise or add to the agenda, please get in touch!*

[clerk@fairfields-pc.gov.uk](mailto:clerk@fairfields-pc.gov.uk)



# FINANCING FAIRFIELDS COMMUNITY COUNCIL

## Community Council Funding - the Precept!

The Precept is tax, included within your Milton Keynes City Council Tax, which enables Fairfield's Community Council to perform its functions.

## How is the Precept calculated?

Fairfield's Community Council is required (by law) to agree a budget before it can set its Precept and both must be agreed by the full council; this took place on Monday 09/01/25.

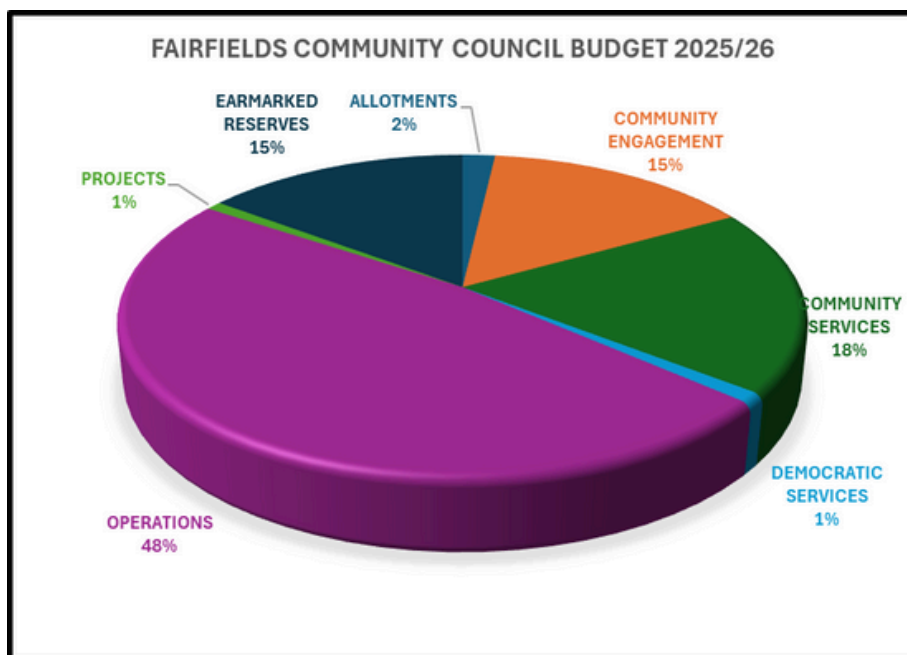
Once Fairfield's Community Council has forecast its budget requirements for the following financial year 2025/26, it requests this funding from Milton Keynes City Council.

## What does this mean for you?

In today's tough financial climate, we do appreciate that families are feeling the squeeze from rising costs and unexpected expenses, compounded by a volatile economy and the uncertainty of potential political changes.

It is important that we take proactive steps to manage the public purse wisely and plan for future spend on both investing and maintaining our public assets and services, which includes bins, benches, new community building, allotments, noticeboard(s), Apollo Green, speed indicators, crime, newsletter, defibrillator(s), play sessions, community event(s), to mention a few.

We also want to make sure that we create a strong community and would like residents to get out to meet, engage, mingle and enjoy some events, which we need your feedback on what you would like.



**Operations:** (staff costs, training, website, phone, stationary, room hire, insurance, memberships, IT, bank charges, audit, legal).

**Allotments:** (running costs of both sites to include landscaping, NAS membership, software, sundry).

**Services:** (bins, SIDs, grants, defib, noticeboards, CCTV, outreach service).

**Community Events:** (summer play sessions, craft packs, annual event, coffee mornings).

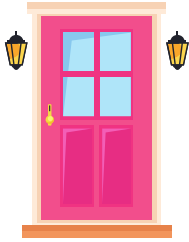
**Earmarked Reserves:** (Community Building fitout)



## HOUSING TAX BANDS

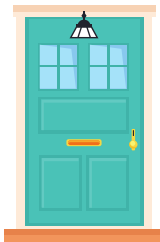
We have made a small increase in the precept this year to include both more events and earmarking additional funds for the fitout of our community building. The increase is between 21p and 64p, depending on your specific tax band (details below).

### BAND A



2024/25 = £55.63  
2025/26 = £66.71  
Increase = 21p/week

### BAND B



2024/25 = £64.77  
2025/26 = £77.66  
Increase = 25p/week

### BAND C



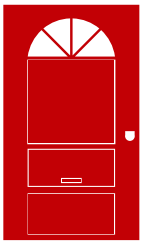
2024/25 = £73.90  
2025/26 = £88.61  
Increase = 28p/week

### BAND D



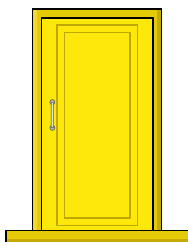
2024/25 = £83.04  
2025/26 = £99.56  
Increase = 32p/week

### BAND E



2024/25 = £101.30  
2025/26 = £121.47  
Increase = 39p/week

### BAND F



2024/25 = £119.57  
2025/26 = £143.37  
Increase = 46p/week

### BAND G



2024/25 = £138.67  
2025/26 = £166.27  
Increase = 53p/week

### BAND H



2024/25 = £166.07  
2025/26 = £199.13  
Increase = 64p/week



WE CONTINUE TO PUT PRESSURE ON MILTON KEYNES CITY COUNCIL TO BUILD YOUR COMMUNITY BUILDING AND ARE BUILDING UP EARMARKED RESERVES FOR THE FITOUT COSTS!



OUR NEW NOTICEBOARD WILL BE INSTALLED OUTSIDE ALL HALLOWS PLAY PARK ON CICERO AVENUE, WEEK COMMENCING 17/03!

# COMPLAINTS RECEIVED!

## DOG OWNERS!



### The Importance of Picking Up After Your Dog:

A Friendly Reminder for Pet Owners

Owning a dog is a wonderful experience filled with joy, companionship, and countless memorable moments. However, being a responsible pet owner comes with certain duties, one of the most important being picking up after your dog. Here's why this simple act is crucial for everyone:

**Health and Hygiene** - help prevent the spread of diseases.

**Environmental Impact** - Dog poop left on the ground can wash into storm drains and eventually pollute rivers, lakes, and oceans

**Community Courtesy** - it's a small act that makes a big difference in maintaining the quality of shared spaces.

**Legal Responsibility** - failing to pick up can result in fines and penalties.

Do your part to keep the community beautiful and safe otherwise you could be fined due to Environmental antisocial behaviour!



## PARKING!



We have had a number of complaints from residents about visitor parking spaces and some verbal abuse.

Visitor spaces are there for that purpose and unless the parking space outside your house is specifically listed on your deeds, it is not a given that residents are entitled to use the space on a permanent basis.

Please be considerate and courteous with your neighbours and their visitors. Any anti social behaviour or verbal abuse should be reported directly to the police. Fairfield's Community Council do not have any powers to act and will not get involved in neighbour disputes.

## GREEN CLOTHING BIN



**This bin just appeared without any permission given!**

According to Companies House, People Unite Clothing Limited is registered as a private limited company. The company says the nature of the business is for the "collection of non-hazardous waste". Make sure that when you donate clothing, there is a clear Charity Number listed.

I have found a company to remove the bin, so hopefully by the time you are reading this, the bin has gone!



## ALLOTMENTS AVAILABLE

We still have available allotments on our site at Maximus, if you are interested in having a look, please get in contact or head over to our website for more details.

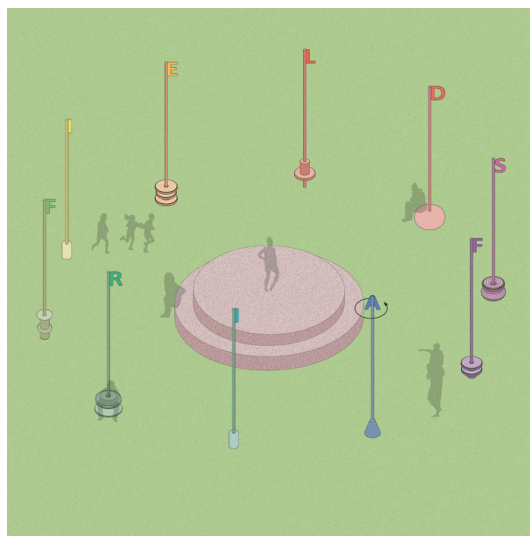
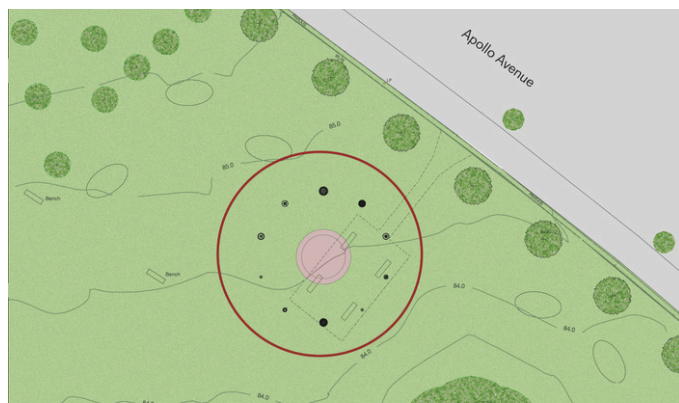
**email:** [lerk@fairfields-pc.gov.uk](mailto:lerk@fairfields-pc.gov.uk)     **website:** [www.fairfields-pc.gov.uk](http://www.fairfields-pc.gov.uk)

### WAYS TO SAVE WATER ON THE ALLOTMENT?

Our water meters have now been installed and water charges will apply to tenants.

- Healthy compost soil will keep moisture and nutrients in..
- If you have a shed or greenhouse, install guttering and collect water into a waterbutt.
- Use a bucket when washing your tools, don't leave the tap running.

## PUBLIC ART UPDATE



### 'Fairfields Lettervanes'

Over the past few months, we have further developed the ideas for the new public artwork in consultation with the community council.

The current proposal will be sited where the existing four benches are currently located, and will celebrate the name of Fairfields itself, with a circular arrangement of ten 'Lettervanes', each one formed of a column with seating at its base atop with a single letter, and together spelling out the name of Fairfields.

The Lettervanes will encircle a raised central platform with additional perimeter seating, offering multiple places to sit and rest. The ambition is to create a distinctive landmark artwork, which also doubles up as playful space for residents to sit, play, admire the view and gather. The existing four benches will be relocated close by.

The proposal makes visible the natural forces of the wind and sun, as the Lettervanes will all be fabricated to rotate in the direction of the wind and will be constructed of reflective and or translucent materials to catch the light, creating an animated, flickering display.

The colours and forms of the Lettervanes shown here are indicative; our ambition is for the design and letter forms of these playful sculptures will be developed with the community through a series of workshops, where we shall explore the shapes and forms of the lettervanes and seats.

One of these workshops will take place at the next Community Day in May, we hope you can join us!

**Update from Juliet Quintero@Public Art Matters**



## **EASTER PLAY SESSIONS (INDOORS)**

Location: The Sports Hub, Apollo Avenue

Dates: 10/04 & 17/04

Times: 09h30 to 11h30

*Booking required*



## **COFFEE MORNINGS/AFTERNOONS**

Location: The Sports Hub, Apollo Avenue

Dates: May to Nov (TBC)

Times: TBC



## **LITTER PICKS**

Location: TBC

Dates: May / September

Times: TBC



## **QUIZ NIGHTS**

Location: The Sports Hub, Apollo Avenue

Dates: Thurs 03 Jul and 18 Dec

Times: 19h30-21h30

*Booking required*



## **SUMMER PLAY SESSIONS**

Location: All Hallows Play Park

Dates: Fri 01/08, 08/08, 15/08, 22/08, 29/08

Times: 09h30 to 11h30

*Booking required*



## **SUMMER PLAY SESSIONS (TEENS)**

Location: Local Play Area off Juno Lane

Dates: Tue 29/07, 12/08, 26/08

Times: 13h30 to 16h30

*Booking required*



## **BASKETBALL SESSIONS**

Location: Local Play Area off Juno Lane (MUGA)

Dates: Aug (TBC)

Times:

*Booking required*

*We will confirm the remainder of dates, times and locations asap, keep an eye out on social media, website and noticeboards!*



# UPDATES

## **FENCING-OLD RESERVOIR**

The area will be cleared and tidied by the developer, all trees will be reviewed and the Heras fencing will be replaced with a 3-bar fence. Once all these works have been completed, it will be the responsibility of Hegarty to maintain it.

## **SHOP/CAFE**

Now that all the heavy duty works have been completed and the TESCO open, next steps will be to look at the applicants and move this forward.

## **GSN FENCING**

The ecologist has advised that the conditions are not right at the moment, they hope to be in a position to remove the fence in April 25.

## **ROAD RESURFACING**

This will commence in April 25 once the daytime temperatures are acceptable for the type of material which they are required to lay. You will see that the developer has been looking at and sorting all the drains.

## **ROAD MARKINGS**

Once the final road surface has been laid, the road markings will be completed. The developer will also be putting in a bridle crossing on Apollo, which is just up the road from the TESCO store. As soon as we have sight of the road marking plans, we will share this with residents.

## **ALLOTMENT WATER METERS**

These have finally been installed by the developer.

## **TUDOR GARDENS REDWAY**

There continues to be delays due to Milton Keynes City Council ensuring that they comply with the various ecology regulations however, they will ask the project lead to see if they can put down some wood chippings as a temporary solution to keep it dry.

## **CONTROLLED CROSSING ON WATLING STREET**

Milton Keynes City Council will be looking to install safety railings in the central reservation where people have to wait to cross. We await confirmation of timescale.

# DID YOU KNOW!

## VIRTUAL MEETINGS



We now run our meetings both in person and virtually for residents who would like to log in from the comfort of their home. If you head over to our website, the virtual meeting log-on link is listed on our agenda. Alternatively, if you contact [clerk@fairfields-pc.gov.uk](mailto:clerk@fairfields-pc.gov.uk) and we will be happy to send through the link

## RESIDENTS GROUP EMAIL



Be first to know! We have set up a group email for RESIDENTS so that you can receive information from us. If you would like us to add you to this group, please send your email through to [clerk@fairfields-pc.gov.uk](mailto:clerk@fairfields-pc.gov.uk). Your email address will not be shared with other residents.



It's been a long wait for residents in Fairfields and it has finally arrived! - a new shop! We welcome the staff at the new TESCO EXPRESS on Apollo Avenue.



01908 736 899



[clerk@fairfields-pc.gov.uk](mailto:clerk@fairfields-pc.gov.uk)



[www.fairfields-pc.gov.uk](http://www.fairfields-pc.gov.uk)

If you have any suggestions or wish to notify us of any issues, please get in contact!