

THE TOMMIES

Lest we forget

Residents will have seen the two figures of soldiers on the corner of Apollo Avenue and Cicero Crescent placed there by Fairfields Parish Council as a tribute for Remembrance Day to those who sacrificed everything to protect our freedom.

Tommy Atkins (often just Tommy) is slang for a common soldier in the British Army. In the 1914-1918 war German soldiers would call out to "Tommy" across no man's land if they wished to speak to a British soldier. French and Commonwealth troops would also call British soldiers "Tommys".

'Lest we forget' is actually a phrase taken from Rudyard Kipling's 1987 poem *Recessional* – which was written to mark Queen Victoria's

Diamond Jubilee. However the phrases has taken on new meaning in its association with those who gave their lives in the First World War – serving as a reminder that nothing as devastating should ever be allowed to happen again.

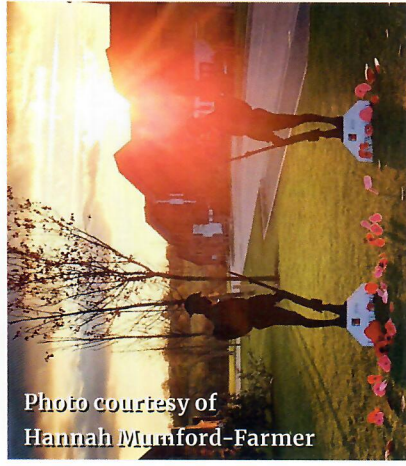


Photo courtesy of Hannah Mumford-Farmer

VACANCY FOR PARISH COUNCILLOR

Fairfields Parish Council has a vacancy for a Parish Councillor. This is a voluntary post and the successful candidate must be:-

- Aged 18 yrs or over and be a British Citizen or a qualifying Commonwealth citizen, and at least one of the following must apply:
- he/she is an elector for the Parish and continues to be an elector; or
- has resided in the Parish for the past twelve months or rented/tenanted land in the Parish; or
- has had his/her principal or only place of work in the Parish for the past twelve months; or
- has lived within three miles of the Parish for

the past twelve months.

The Parish Council meets on the second Tuesday of each month at 6.30pm at Fairfields Primary School. If you would like to be part of an organisation that is helping to shape the future of Fairfields and work to make it a fantastic place to live, please get in touch.

For further information please contact the Parish Clerk on:
clerk@fairfields-pc.gov.uk
or call **07717 752 748**



FAIRFIELDS FORUM

A MESSAGE FROM THE CHAIRMAN

2022

WELCOME TO

The start of each new year is a time to reflect on the year just past and 2021 has certainly been a challenging year for everyone but now is also a time to make plans for the future.

In this winter newsletter you will read that Barratt David Wilson Homes has submitted a planning application to Milton Keynes Council for our local centre to include a retail shop and a café. Better 'latte' than never.

More good news is that a programme of work has been approved to create a community park just off Apollo Avenue adjacent to Fairfields Primary School. The land will be in Parish Council ownership and in a recent poll was named by residents as Apollo Green.

We are also looking forward to the

completion of the Sports Hub this year and although this is a borough wide facility discussions are taking place between the Parish Council and MKDonsSET, the operators, about how its use can be rolled out to Fairfields residents.

The provision of our own community building is still a work in progress and the Parish Council is continuing discussions with Milton Keynes Council and the Developers on order to achieve a positive outcome.

Plenty to look forward to so here's to better times ahead for us all! Wishing you a happy, safe and healthy 2022.

Jawhant

Chairman Fairfields Parish Council

PARISH COUNCIL CONTACT

Parish Clerk, Mrs Jean Nicholas
clerk@fairfields-pc.gov.uk

FAIRFIELDS LOCAL CENTRE *Brickfield Square*

Barratt David Wilson Homes have submitted a planning application to Milton Keynes Council which includes the provision of a local centre to be sited on Apollo Avenue. This will be named Brickfield Square.

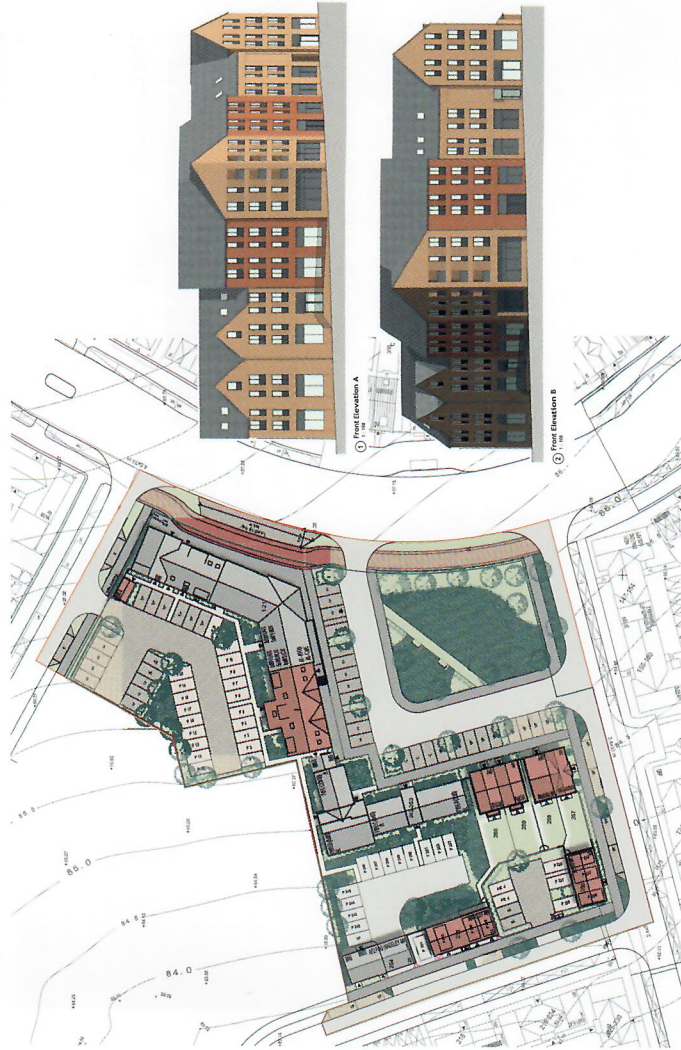
A detailed landscaping plan for Brickfield Square has been produced and is included within this planning application. There will be an informal grass area to include benches to offer opportunities for residents and visitors to rest and socialise

The centre will comprise two commercial units and 21 dwellings. The developers have taken on board feedback received from both Fairfields Parish Council and the Milton Keynes Council planners and have decided that a shop and a café (rather than a fast food takeaway) would be better received by the residents of Fairfields. Residents will recall that a café was the preferred option when householders were surveyed on their views.

News on the outcome of the planning application will be available on Facebook and the Parish Council website as soon as this is known.

On the Local Centre site itself, 21 flats are to be constructed. The mix will be as follows:

- 6 x Open Market Housing
- 6 x Reduced Cost Housing
- 9 x Low Cost Housing



APOLLO GREEN Our Community Park

We are running about a month behind our original schedule due to work that had to be done on the large tree which is an ash and was suffering from dieback.

The tree was in a very poor condition, and we obtained three quotes as to what should be done with it. All the arboriculturists came back with the same opinion that the work undertaken (pollarding) was the only option short of taking the tree down completely. All the timber removed had extensive decay which would at some point have led to the tree at a high risk of failure in bad weather, just as the other tree next to this site fell in November 2020. Cutting the tree back was not an option there was far too much decay. Even now the tree will need to be closely monitored, as there is significant decay in the main stem.

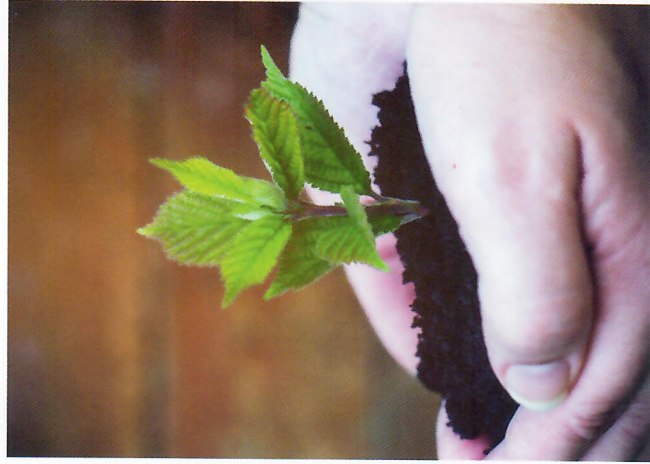
The contractor now expects to complete the main layout and works on the land by early 2022 weather permitting. They will also plant some of the larger trees and small fruit orchard during that period. although the wildflower seeds will wait until the Spring which is the best time to set them. Boundary hedges and small saplings will be supplied and planted by Community Trees MK with volunteers on 12th February 2022 and if you are interested in volunteering the contact details are in this newsletter.

One of the items in our plans is for 3,750 bulbs "to be planted by others" and we hope

when we come to that stage, we will get some resident volunteers to help with this, unfortunately the hard ground works going on did not facilitate planting of bulbs in time for this season so this planting will now take place in September/October 2022.

We hope in the future when funding allows to add planters for shrubs to attract butterflies and to increase the biodiversity.

A poll of residents has been held on Facebook to suggest names for this facility and these were then voted on. "Apollo Green" received more votes than any of the other suggestions so that is how we will refer to it in the future.



DO YOU WANT TO PLANT TREES?

Introducing Community Trees:MK working with Fairfields Parish Council, Cross Keys Homes and MK Community Foundation:-

We are Community Trees Milton Keynes and we have a very simple initial mission – to enable communities to plant at least 1000 trees each year for ten years.

We set up our charitable group in 2020, which turned out not to be the best year to start! However with a little help from The Parks Trust and various Parish Councils we beat our target and got 1,700 trees planted in our first year. We have a tree nursery on an allotment site loaned to us by the Broughton and MKV Parish Council and, we are working with The Parks Trust Outdoor Learning Team to help schools plant trees in MK.

Now we need your help with our exciting plans and a new weekend community tree planting event for the coming winter season. We have trees provided by Cross Keys Homes, and we are ready to plant at Fairfields!

There will be a community tree planting day with the Parish Council and Cross Keys Homes at the new Fairfield Community Park, next to Fairfields Primary School, Apollo Avenue on 12th February 2022. We will be planting a hedge and a few small copses of trees as part of the new community park. There will be two planting sessions on the day with up to 25 places available at each session. The morning session is 10am-1pm while the afternoon session starts at 2.00pm and finishes at 5.00pm.

We have more than 350 trees to plant on the day and so please come and help us and give Fairfields Community Park the best possible start. If you are interested to join in, save the date and get your warm clothes ready! Booking is essential.

COMMUNITY TREES:MK



More details and booking on our Facebook page
www.facebook.com/communitytreesmk

WINTER GARDEN

Daylight hours are short in winter, but if the weather allows, a few hours spent in the garden or on the allotment at this time of year will not only warm you up and reward you with some tasty crops – you'll reap the benefits next year, too.

HARVEST VEGETABLES

You can harvest lots of vegetables including parsnips, leeks and winter cabbages, all of which can be left in the ground until you need them. It's difficult to harvest crops from frozen soil, so if temperatures plummet, cover the soil with straw. Harvest brussels sprouts when they are around one inch in diameter, before they 'blow open'. Pick them from the base of the plant up, twisting them away from the plant. If you don't have these vegetables now is the time to plan for next year and order your seeds. This is one of my favourite pastimes when the weather is bad, going through the seed catalogues and planning what I am going to grow next year.



Always make sure you rotate your vegetables as if you grow the same crop in the same place each year the soil becomes spent and needs lots of fertiliser to give you a good crop. Don't fertilise where you are going to grow parsnips as they don't like it and come back in some funny shapes...

Jean Nicholas

KEEPING KIDS OFF THE STREET

Keeping Kids Off The Streets is a non-profit community organisation aimed at providing a FREE workshop for kids.

Karl Hanif the creator of KKOTS is convinced that teaching children discipline through boxing or sport early on is the key to ensuring trouble-free teenage years. He also believes that many youngsters take to drugs and street crime simply because they have nothing else to do.

"Drugs are so connected to gangs, knives and crime. We have 13 year olds being given drugs by 17 year olds and the 17-year-old being given drugs by men in their 20s. We need to stop this cycle and offer these kids an alternative."

For a few years, Karl has been putting his money where his mouth is and largely funding KKOTS himself.

In a meeting I asked Karl what inspired him to put together the KKOTS workshop and he explained he saw a deeper need for discipline in his children when he noticed a difference in his children towards social and gang cultures.

Karl feels that the recent hike in knife and gang crime across Milton Keynes and the UK is sickening and feels hurt that kids want to lower themselves to use a knife on another person. He went on to explain that parents can help their children stay away from the gangs and cultures by coming along to his workshops. Karl wants to see one of his workshops on every estate in Milton Keynes so they can easily access

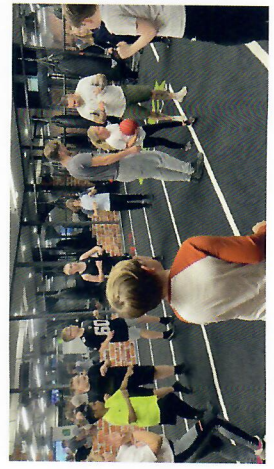
his programme. One of the common excuses he hears from parents is that the travel and training costs are too expensive so he created his workshops to be FREE.

I went along to Karl's KKOTS workshop just across the road at Kiln Farm and saw kids between the ages 6 and 18 actively participating in Boxing lessons, there were exciting drills taking place that demonstrate character building, Discipline and fitness and they looked to be having fun in the process. Karl and his team of volunteers also cook and provide over 500 hot meals a week to the local homeless.

The Free Boxing for kids workshop is available Monday's at Great Linford Primary School at 6pm for ages 6-10, 7pm for ages 10-18 and at Kiln Farm Energie Fitness gym on Fridays 5pm for ages 6-10 and 6pm ages 10-18.

All you have to do to for your child to attend is contact Karl on 07404 809 873 or email info@keepingkidsoffthestreets.co.uk and offer a donation each week if you are able to.

Mr Jamie Harris
Fairfields Parish Council



EXPLORE FAIRFIELDS & WHITEHOUSE - *New website*

Milton Keynes Council has commissioned a new website www.explorefw.org.uk that encourages residents to learn about the past, get involved in the present and contribute to the future of your area.

ABOUT

The Explore Fairfields and Whitehouse website has information about the area, with a range of articles about local heritage, walks and nearby interesting places. You can find out about the lost railway track and farms, discover the cultural cycle routes, and learn about Whitehouse street names. Sitting alongside this is a section that provides ideas for activities you might like to try, including bug hunting and an autumn leaf challenge. There are also worksheets on tree identification and butterfly spotting for you to use on your walks around the area and wider Milton Keynes.

The website is just the start, over the next few years, there will be a series of artist led creative projects taking place in Fairfields and Whitehouse. Artists will be invited to undertake the various projects and you will be able to get involved, contribute, engage with the process and inform ideas/designs. Artists delivering projects will connect with residents, develop activities and generate ideas for the public art, this information will be added to the website.

If you would like to find out more about the public art projects, please see the Public Art Plan for Fairfields and Whitehouse, which is available on the website.

PARTNERS AND FUNDING
This website and the series of public art projects are being delivered through a partnership between Milton Keynes Council, Whitehouse Community Council, Fairfields Parish Council, MK Parks Trust, and Whitehouse Primary School. It is funded through contributions made by the housebuilders and developers.

The website is the first project in the plan to be delivered and has been developed by Unit 1. They have helped develop the content and approach with a focus on heritage and creative opportunities.

Unit 1, led by Katherine Hall specialise in digital projects and development, they have supported the design, build and content of the website. (<https://www.unit1.co.uk/>)

FAIRFIELDS HALLOWEEN LITTER PICK

Over the last few months Fairfields Parish Council have organised and facilitated a number of community litter picks, often occurring at the end of the month. The turn out so far has been fantastic and has helped keep our wonderful parish looking great.

To spice things up the Parish Council opted to do things slightly differently for the October litter pick, it was decided to do a Halloween themed event in which ten Halloween pictures were hidden around the development for our spooky Halloween Helpers to find.

Ten clues were provided to assist in finding these pictures, furthermore a what3words address was also included to assist parents in guiding their children to the right location.

The pictures were put up the night before the litter pick and taken down two days afterwards in order to allow families who couldn't make the event to still participate.

We had four families turn up on the day who collectively helped pick up five full bin bags, the Parish Council would like to thank those that turned up for their help and we hope to see you again in the future, if there is sufficient interest we would be more than happy to do other themed community litter picks in the future.

Next litter pick is scheduled to start at 12 noon on Sunday 30 January 2022.

Cllr Kevl Findlay
Fairfields Parish Council



EXPLORE FAIRFIELDS AND WHITEHOUSE

NEW WEBSITE
Learn about the past, get involved in the present and contribute to the future through local art projects and articles.
explorefw.org.uk



CRIME PREVENTION ADVICE

The dark winter nights are with us and these are also the times that can attract crime.

THE HOME

Do not leave valuables on display so they can be seen from the outside. The police have previously advised householders to install a home safe in which to keep gold and jewellery. However, following cases when homes have been ransacked and safes ripped out, we are now saying "don't keep gold in your home". If possible use a commercial safety deposit box. If none is available locally or you are not happy keeping the gold away from you, the advice is to equip the house with robust theft proof gadgets that can be secured to a solid floor or solid wall.

- Invest in a good quality safe, which complies with official insurance rating standards. A Home Office website www.securedbydesign.com lists approved security products.
- Remember to lock all doors and windows when you leave your home unattended. Consider using time switches for lights if you are away from home. Use of LED bulbs will not be a drain on your electricity bill.
- Install burglar alarms and CCTV as a deterrent. Many companies sell security gadgets which allow

the homeowner to monitor every corner of their property. These include a video door bell and stick up cameras. Some devices have built-in microphones and speakers, so you can hear and speak to anyone on your property at any time through your phone app.

- Don't be tricked into letting unknown people onto your property. Check the caller's identity before opening the door. If you are not sure, don't open the door.
- Restrict access to the rear of your property. If you have a gate, ensure it is in good condition and securely fixed to the wall or post. Always lock it when not in use.

- Consider installing security lights to cover the front and rear of the property. These should be either on motion detectors or "dusk to dawn" lights.

- Be aware of strangers or strange vehicles in your area. If you see anything unusual, odd or suspicious take a description and vehicle registration number and contact your local police.

There have been reports of victims being targeted because of information that offenders have gained online. We urge people to consider what personal

information they list openly online and whether this could potentially leave them vulnerable to being targeted, e.g. writing on Facebook that the family are going out for the day.

THE JEWELLERY

- Take photographs of each piece of valuable gold or jewellery and include a written description. If it is stolen this will help in appealing for information and hopefully returning it to you.
- Use a marker such as Smartwater®, a traceable liquid that can mark gold and jewellery with a unique forensic code. The "Secured by Design" website, www.securedbydesign.com, provides more information on property marking products.
- Ensure your jewellery is adequately covered by insurance and you have an agreed valuation.

PERSONAL SAFETY

- If you receive a call asking questions about your identity, financial status or any other personal information, do not divulge it.
- When wearing jewellery in public, be cautious and avoid attracting unwanted attention. Consider wearing a scarf or similar to cover your neckline, long sleeves to cover the wrists, etc.

- If you are driving to a celebration, try to travel in a group and use well-lit streets. Remember where you have parked and ensure your car is locked.

- If you are getting a taxi use a valid taxi service or online cab checker to confirm it is licensed. You can send the registration number to a friend so that they know which car you are in.
- Avoid walking alone.
- If you are using a Safety Deposit Box property, be vigilant. If possible go with a trusted family member or friend. Secure jewellery / coins in a closed bag.

