

ISSUE 7 - AUTUMN 2021



# FAIRFIELDS FORUM

[WWW.FAIRFIELDS-PC.ORG.UK](http://WWW.FAIRFIELDS-PC.ORG.UK)

## A MESSAGE FROM THE CHAIRMAN

Welcome to this edition of the Fairfields Parish Council newsletter – leaves are falling and autumn is calling but let's hope that we get to see some late sunshine before the days get much shorter.

Despite the disappointing summer our allotment holders have produced some remarkable results in a reactively short space of time and examples of this are shown in a number of photos to be found later in this newsletter.

Poor weather didn't hamper the MK Play Association play days which are funded by the Parish Council for your enjoyment and remains popular with residents.

We are delighted to announce that the Parish Council has now agreed proposals and funding to create a community park in place of the neglected parcel of scrub land next to the school car park fronting Apollo Avenue. Details of the park and a plan showing the layout are included in this edition.

Not such good news regarding the provision of a community building

and shops but rest assured that the Parish Council is actively pursuing both matters with Milton Keynes Council and the Developers.

Community litter picking will continue on a monthly basis throughout the year so do try and attend one of the events and show you care about Fairfields. Details will be announced on our Facebook page.

Finally if there are issues you would like to raise with the Parish Council do get in touch. We are here to help.

*Ian Hunt*

Chairman Fairfields Parish Council



Our front cover is courtesy of Gianni De Simone showing what can be achieved in a short time with an allotment on Fairfields. Please see other splendid allotment photos later in this newsletter kindly supplied by Gianni and Shelley Holmes.

## Tiberius Drive

by Jenny Burn

### Continuing with road names on Fairfields, in this Newsletter it's the turn of Tiberius Drive.

#### EMPEROR TIBERIUS

Tiberius Julius Caesar Augustus  
Ruled Rome 14-37 CE

Tiberius was one of Ancient Rome's greatest generals whose campaigns projected well into Rome's northern frontiers. The first part of his imperial work was noteworthy for his successes extending Rome's empire but later, upon the death of his son Drusus in 23CE, he became remembered as dark, reclusive and a sombre ruler and as his rule declined, Rome sank into years of plots and counter-plots and ended in terror.

Tiberius took power from Emperor Augustus (Rome's first Emperor) on condition that he adopt the Emperor's nephew, Germanicus, thus continuing the tradition of presenting at least two generations of heirs.

On the death of Augustus, problems soon arose – the northern legions had not been paid. Tiberius sent his son Drusus and adopted son Germanicus to quell the uprising of the troops. The subsequent campaigns across the Rhine and Germanic territories were highly successful and Tiberius' sons were celebrated in full triumph on their return to Rome. But tragedy struck when Germanicus died a year later in 18CE – apparently poisoned.

Enter Sejanus – he had served the Imperial family for almost 20 years and was a close and trusted confidant to the Emperor. Now with Tiberius' withdrawal from Rome to Capri in 29CE he was well prepared to make his move on power. But as is the case with many a pretender to the throne, it ended badly for Sejanus when Tiberius could no longer tolerate his treasonous acts and had him executed.

More treason was to follow. Tacitus writes that whilst Tiberius was at first hesitant to act against treason, towards the end of his reign he seemed to do so without out compunction. But this portrayal of a tyrannical, vengeful emperor has been challenged by some modern historians;

*“In the whole twenty two years of Tiberius' reign, not more than fifty-two persons were accused of treason, of whom almost half escaped conviction, while four innocent people to be condemned fell victim to the excessive zeal of the Senate, not to the Emperor's tyranny”.*

Tiberius died in his 78th year. Some speculate his demise was hastened by his successor Caligula, his grand-nephew and only surviving son of Germanicus.

#### PARISH COUNCIL CONTACT

Parish Clerk, Mrs Jean Nicholas  
[clerk@fairfields-pc.gov.uk](mailto:clerk@fairfields-pc.gov.uk)



# COMMUNITY PARK FOR FAIRFIELDS

At the beginning of 2021 the Parish Council became aware of a neglected parcel of scrub land next to the school car park fronting Apollo Avenue. The land belonged to Redlawn who originally owned all the land making up the Fairfields development. An approach was made to Redlawn to find out their plans for this land. There were no plans as it had proved an awkward site both in shape and in contours. Redlawn offered to gift it to the Parish Council with the proviso that we would not build or sell it and would look after it as its only use should be for the community. During lockdown we had seen residents walking aimlessly around Fairfields but felt it would be good to have a Community Park where they could sit and socialise 2 metres apart during COVID but then in the future have somewhere to properly socialise as a community especially those living in flats.

A Landscape architect was engaged to draw up some plans based on the Parish Councils ideas to make this a Community Park which would provide a quiet seating area with the majority landscaped with trees, saplings, shrubs a small orchard area and on the sloped bank a wildflower area. There would be one permanent path leading to the seating area and the rest would have mown paths. Quotes were obtained from landscape contractors and the contract was awarded to RTM Landscapes Ltd. We are pleased to announce that we have now received a grant from MK Community Foundation to help pay for work on this land. Community Trees MK, Cross Keys Homes and

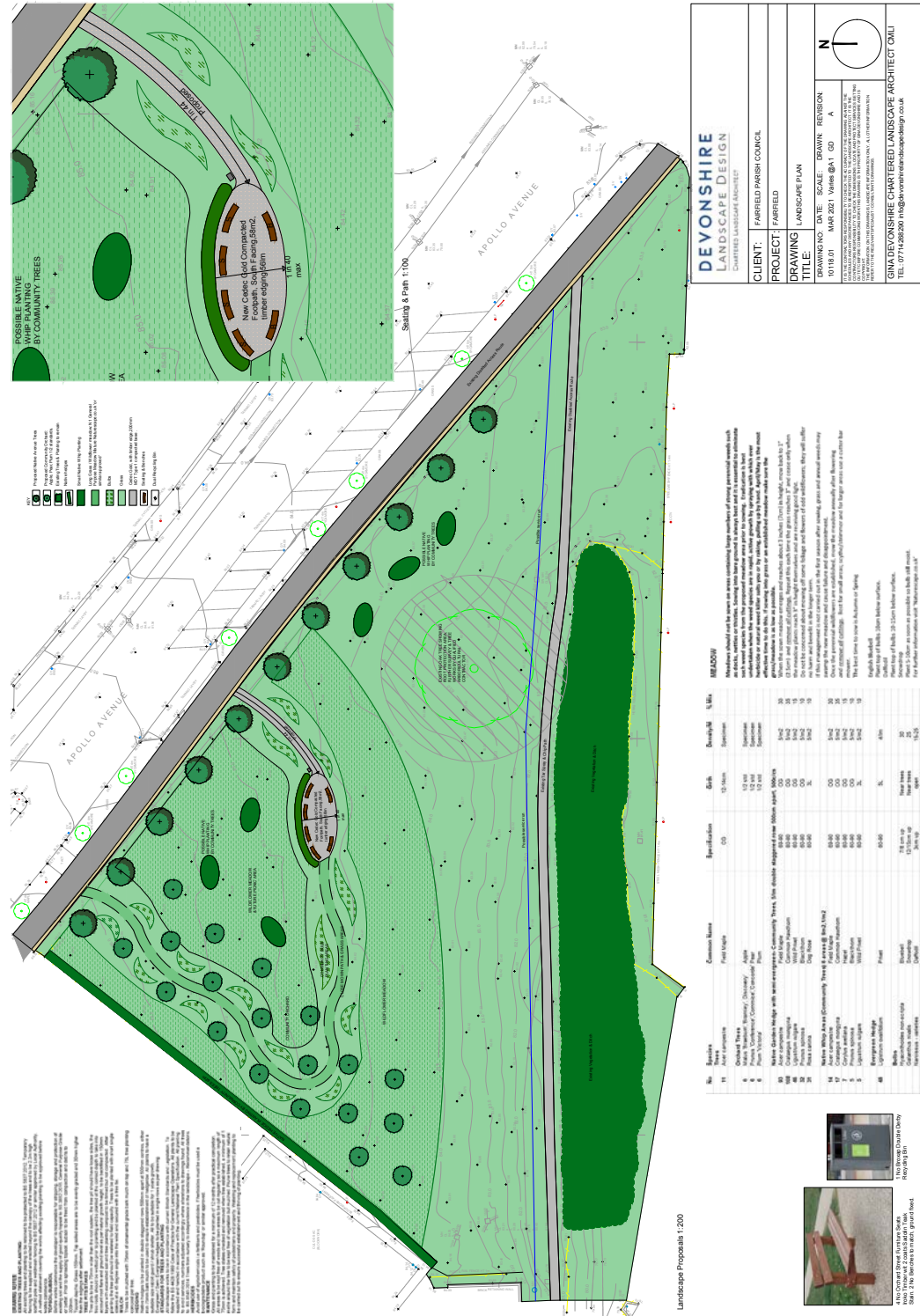
Barratts are also keen to get involved with this project. We hope in the future when funding allows to add planters for flowers to attract butterflies and to increase the biodiversity.

The contractor expects to move onto site mid-September 2021 to commence clearance on the area. They will then commence work on the seating area and the path to it which they hope to complete by December. They will also plant some of the larger trees by December although the wildflower seeds will wait until the Spring which is the best time to set them. Boundary hedges and small saplings will be supplied and planted by Community Trees MK in February. All the time the contractor will be keeping the site tidy with mown paths a priority. All of these dates are weather permitting.

One of the items on the plans is for 3,750 bulbs "to be planted by others" and we hope when we come to that stage, we will get some resident volunteers to help with this, unfortunately the hard works going on will not facilitate planting of bulbs in time for next season so this planting will now take place in September/October 2022. Updates on this will follow in the New Year.

All areas under construction will be contained by Heras fencing. There will be some disruption and we apologise in advance to the nearby residents for this but the outcome will be a much enhanced facility.

*Jean Nicholas*  
Clerk to Fairfields Parish Council



Landscape Proposals 1:200

**DEVONSHIRE LANDSCAPE DESIGN**  
CHARTERED LANDSCAPE ARCHITECT

CLIENT: FAIRFIELD PARISH COUNCIL  
PROJECT: FAIRFIELD  
DRAWING TITLE: LANDSCAPE PLAN  
DRAWING NO: SCALE: DRAWING REVISION  
18/08/21 1:200 01/01/2021 01  
19/08/21 1:200 02/01/2021 02  
20/08/21 1:200 03/01/2021 03  
21/08/21 1:200 04/01/2021 04  
22/08/21 1:200 05/01/2021 05  
23/08/21 1:200 06/01/2021 06  
24/08/21 1:200 07/01/2021 07  
25/08/21 1:200 08/01/2021 08  
26/08/21 1:200 09/01/2021 09  
27/08/21 1:200 10/01/2021 10  
28/08/21 1:200 11/01/2021 11  
29/08/21 1:200 12/01/2021 12  
30/08/21 1:200 13/01/2021 13  
31/08/21 1:200 14/01/2021 14  
01/09/21 1:200 15/01/2021 15  
02/09/21 1:200 16/01/2021 16  
03/09/21 1:200 17/01/2021 17  
04/09/21 1:200 18/01/2021 18  
05/09/21 1:200 19/01/2021 19  
06/09/21 1:200 20/01/2021 20  
07/09/21 1:200 21/01/2021 21  
08/09/21 1:200 22/01/2021 22  
09/09/21 1:200 23/01/2021 23  
10/09/21 1:200 24/01/2021 24  
11/09/21 1:200 25/01/2021 25  
12/09/21 1:200 26/01/2021 26  
13/09/21 1:200 27/01/2021 27  
14/09/21 1:200 28/01/2021 28  
15/09/21 1:200 29/01/2021 29  
16/09/21 1:200 30/01/2021 30  
17/09/21 1:200 31/01/2021 31  
18/09/21 1:200 01/02/2021 32  
19/09/21 1:200 02/02/2021 33  
20/09/21 1:200 03/02/2021 34  
21/09/21 1:200 04/02/2021 35  
22/09/21 1:200 05/02/2021 36  
23/09/21 1:200 06/02/2021 37  
24/09/21 1:200 07/02/2021 38  
25/09/21 1:200 08/02/2021 39  
26/09/21 1:200 09/02/2021 40  
27/09/21 1:200 10/02/2021 41  
28/09/21 1:200 11/02/2021 42  
29/09/21 1:200 12/02/2021 43  
30/09/21 1:200 13/02/2021 44  
01/10/21 1:200 14/02/2021 45  
02/10/21 1:200 15/02/2021 46  
03/10/21 1:200 16/02/2021 47  
04/10/21 1:200 17/02/2021 48  
05/10/21 1:200 18/02/2021 49  
06/10/21 1:200 19/02/2021 50  
07/10/21 1:200 20/02/2021 51  
08/10/21 1:200 21/02/2021 52  
09/10/21 1:200 22/02/2021 53  
10/10/21 1:200 23/02/2021 54  
11/10/21 1:200 24/02/2021 55  
12/10/21 1:200 25/02/2021 56  
13/10/21 1:200 26/02/2021 57  
14/10/21 1:200 27/02/2021 58  
15/10/21 1:200 28/02/2021 59  
16/10/21 1:200 29/02/2021 60  
17/10/21 1:200 01/03/2021 61  
18/10/21 1:200 02/03/2021 62  
19/10/21 1:200 03/03/2021 63  
20/10/21 1:200 04/03/2021 64  
21/10/21 1:200 05/03/2021 65  
22/10/21 1:200 06/03/2021 66  
23/10/21 1:200 07/03/2021 67  
24/10/21 1:200 08/03/2021 68  
25/10/21 1:200 09/03/2021 69  
26/10/21 1:200 10/03/2021 70  
27/10/21 1:200 11/03/2021 71  
28/10/21 1:200 12/03/2021 72  
29/10/21 1:200 13/03/2021 73  
30/10/21 1:200 14/03/2021 74  
31/10/21 1:200 15/03/2021 75  
01/11/21 1:200 16/03/2021 76  
02/11/21 1:200 17/03/2021 77  
03/11/21 1:200 18/03/2021 78  
04/11/21 1:200 19/03/2021 79  
05/11/21 1:200 20/03/2021 80  
06/11/21 1:200 21/03/2021 81  
07/11/21 1:200 22/03/2021 82  
08/11/21 1:200 23/03/2021 83  
09/11/21 1:200 24/03/2021 84  
10/11/21 1:200 25/03/2021 85  
11/11/21 1:200 26/03/2021 86  
12/11/21 1:200 27/03/2021 87  
13/11/21 1:200 28/03/2021 88  
14/11/21 1:200 29/03/2021 89  
15/11/21 1:200 30/03/2021 90  
16/11/21 1:200 31/03/2021 91  
17/11/21 1:200 01/04/2021 92  
18/11/21 1:200 02/04/2021 93  
19/11/21 1:200 03/04/2021 94  
20/11/21 1:200 04/04/2021 95  
21/11/21 1:200 05/04/2021 96  
22/11/21 1:200 06/04/2021 97  
23/11/21 1:200 07/04/2021 98  
24/11/21 1:200 08/04/2021 99  
25/11/21 1:200 09/04/2021 100



# WALKING THE FOOTPATHS OF FAIRFIELDS & BEYOND

In July, more than twenty Fairfields residents joined a walk from Watling Street through Fairfields, past Lower Weald, across fields, almost to the borough boundary of MK, then back through Calverton. This 3-mile walk was led by a member of MK Ramblers and showed how many delightful paths there are within and close to Fairfields.

Four sets of long-established Footpaths and Bridleways are woven into the fabric of Fairfields. These are legally-protected Rights of Way for walkers and riders. Developers are still adding to these the golden-gravel paths, redways and other footways as Fairfields is developed. This network connects to field-paths in the wider countryside beyond.

One way of exploring paths in and around MK is to join organised walks led by MK Ramblers. You don't have to be a member to try out some of their walks. They lead short and long walks and you can find the current programme on their website: [www.mkramblers.org.uk/walks.php](http://www.mkramblers.org.uk/walks.php) Other walks are organised by The Parks Trust and by Walking for Health.

To explore countryside paths on your own, the most reliable source of information is Ordnance Survey (OS) Explorer maps. These show all the public Rights of Way across the countryside, though not all paths within towns. You can buy the two local maps: 192, Buckingham & Milton Keynes and 207, Newport Pagnell &

Northampton South; or pay a subscription for an OS App for online access to their most up-to-date maps of all the UK. An online alternative is Open Street Map, but this omits some Rights of Way and shows Redways as Cycleways although they are shared paths for walkers and cyclists.



The most reliable mapping of paths within MK is the full-colour printed 'Milton Keynes Official City Atlas'. But hurry to buy one soon from local Waterstones or WH Smith as the most recent edition (2017) may be the last. It shows leisure paths, local paths and redways throughout MK, though not much of Fairfields and Whitehouse had been built when this was published. A different kind of mapping is available from MK Council online: [mapping.milton-keynes.gov.uk/mymiltonkeynes.aspx](http://mapping.milton-keynes.gov.uk/mymiltonkeynes.aspx)

Whatever way you find your local paths, there are peaceful places nearby where you can hear birds of the countryside such as skylarks and yellowhammer, see hares, pass through pastures grazed by sheep, watch butterflies and enjoy the calm of the surrounding countryside.

*Mike LeRoy*

# 20 IS PLENTY

It is clear that although the speed indicator device installed in Vespasian Road is set at 20mph, many drivers will go over this limit either ignoring it altogether or speeding up immediately after passing the device and continuing to drive at a higher speed throughout Fairfields particularly on Cicero Crescent.

Even though the risk of pedestrians being killed at 30 mph is relatively low, approximately half of pedestrian fatalities occur at this impact speed or below.

Also the risk of a seat-belted car driver being killed in an impact with another car is much higher in a side impact than in a frontal impact with this same change of velocity.

**LET'S TRY AND KEEP OUR SPEEDS DOWN,  
YOU KNOW 20MPH MAKES SENSE**



# AUTUMN WORK IN THE ALLOTMENTS AND GARDENS

## ALLOTMENTS

The real enemy this year has been keeping the weeds under control. If you haven't had the time to keep them under control on the whole allotment start by cultivating a part of it and as weeds come through on the rest trample them down. Even when they are quite large this just breaks them off at the root and slows down their progress. This should ideally be done before they have the chance to seed.

Weeds will die without light so any area you have not cultivated will benefit by being covered, this can be with membrane or even large sheets of coloured not clear polythene, anchored down so that it doesn't blow away. I have also been very successful with covering the weeds with old carpet anything that will exclude the light. In February/March uncover the area and prepare the soil for planting, removing any insidious weed roots. This will give you a good start to next season and it will be easier to keep on top of weeds.



## CYCLAMENS

This summer cyclamens have been very popular as a bedding plant. Now is the time to conserve some for winter colour indoors.

When the plants die down in the late autumn don't dig them up to put on the compost heap. They can make lovely houseplants with just a bit of effort.

- During the summer most of them will have formed small tubers. Take the tubers and dry them out indoors on newspaper for 2 – 3 weeks.

- Once they are looking a bit shrivelled, take off all the old soil taking care not to damage the tubers and "plant" in small pots of compost suitable for your windowsills. To plant them you should just place the tuber so that it is slightly sunken into the compost but NOT buried.

- Commence watering and always keep them moist and they should start to shoot leaves from the top of the tuber in a few weeks

- In late January they will be covered in blooms just when colour is needed in the house.

*Jean Nicholas*

Clerk to Fairfields Parish Council



Enjoy your autumn on the allotment or in the garden.

# COMMUNITY ACTION: MK

We are at Whitehouse Medical Centre every Thursday from 9.00am - 1.00pm.

You can drop in and see Community Action: MK between 9.00am - 11.00am regarding our services, finding volunteer roles, asking questions about the local area and getting to know the local community and voluntary sector. Then from 11.00am - 1.00pm we have a variety of groups and organisations from the voluntary and community sector joining us. Details of which are shown in the following schedule.

Following on from organising the guided walk 'Beyond the Redways' we are keen to do more events in Fairfields so if you just sign up and follow the Eventbrite page you will be able to see what's coming

**Tel: 01908 661 623**

**Email: [danielle@communityactionmk.org](mailto:danielle@communityactionmk.org)**

## Community Groups and Organisations Drop in Sessions - Come and talk to us!

**Thursday 23rd September**  
12pm - 1pm

**Age UK**

Offer a range of services enabling older people to live an active & healthy lifestyle. Practical advice & support for those who need a little help to live independently

**Thursday 30th September**  
11am - 1pm

**Harry's Rainbow**

Supporting children bereaved of a parent or sibling. Come and talk to us to see how we can support you. We have lots of information to share.

**Thursday 7th October**  
11am - 12pm

**Ethnic Minority Achievement Network**

To raise the attainment of BME/EAL children & support supplementary schools who provide a community of language/culture, faith.

**Thursday 7th October**  
12pm - 1pm

**Citizens Advice**

We are here to help. Offering free, independent, impartial and confidential advice. Have a chat with us and find out how we can help.

**Thursday 14th October**  
11am - 12pm

**MK City Discovery Centre**

An educational charity set in 12 acres of woodland. With a community garden and gardening club. You can come help us grow fruit and veg!

**Thursday 14th October**  
12pm - 1pm

**Volunteering Matters**

Come & talk to VM about their Stepping Stones project. Find out about how you can get involved and support young people leaving mental health inpatient services.

**Thursday 21st October**  
11am - 1pm

**MK ACT**

The local Domestic Abuse Intervention Service. A Volunteer will be available to tell you about the many Services we offer to victims/ survivors of Domestic Abuse.

**Thursday 28th October**  
11am - 12pm

**Headway Milton Keynes**

Come have a chat with us to find out more about how we can support brain injury survivors & for info about the volunteering opportunities we have available in our service.

If your organisation would be interested in engaging with this space, please email [danielle@communityactionmk.org](mailto:danielle@communityactionmk.org)



01908 661623



[danielle@communityactionmk.org](mailto:danielle@communityactionmk.org)

**COMMUNITY ACTION: MK**

Charity No. 1092047



# COULD YOUR SPARE ROOM BE A SAFE PLACE TO SLEEP?

Depaul UK is looking for volunteer hosts in Fairfields to help change the lives of young people at risk of homelessness.

Nightstop Milton Keynes aims to provide a safe place to sleep for vulnerable young people aged 16-25 in the homes of trained and vetted volunteer hosts. Hosts offer up their spare room for one night at a time, providing a safer and more welcoming alternative than the traditional emergency accommodation options.

The national youth homelessness prevention charity Depaul UK, is currently setting up this innovative service in Milton Keynes, commissioned by the Milton Keynes Council. Although new to town, Nightstop is already up and running successfully in over 30 locations around the UK and abroad. However, as the service relies on their army of volunteers, the Depaul MK team are asking for your help!

Nightstop is looking for people in Fairfields who can offer young people a bed for the night, a hot meal, a wash, and a listening ear. Is this something you could do?

Hosts can commit to as much or as little time as they are able – just one night can make a difference. As well as being flexible, the safety and wellbeing of their guests and hosts is of

the utmost importance. Extensive training and full support is provided, including access to out-of-hours support.

The primary reason why young people initially become homeless is due to a breakdown in family relationships. This is why, as well as the Nightstop service, Depaul UK runs its Reconnect service working with young people and their families to overcome conflict.

## Could you positively impact a young person's life in Milton Keynes?

If you would like to find out more about hosting or other volunteering opportunities with Depaul or would like to attend an information session, please contact Catherine or Lucy by calling **0330 555 0180**, or you can email **[nightstop.mk@depaulcharity.org.uk](mailto:nightstop.mk@depaulcharity.org.uk)** alternatively you can follow them on Facebook **@DepaulMiltonKeynes**.

### Catherine Robinson

Community Engagement and Communications Officer  
Milton Keynes, Depaul UK  
E: [catherine.robinson@depaulcharity.org.uk](mailto:catherine.robinson@depaulcharity.org.uk)  
T: 03305 550 180 M: 07929 752 968  
[www.depaulcharity.org.uk](http://www.depaulcharity.org.uk)

# DEPAUL

Homelessness has no place

[uk.depaulcharity.org/nightstop/nightstop-milton-keynes/](http://uk.depaulcharity.org/nightstop/nightstop-milton-keynes/)