

## TOP 5 RECYCLING OFFENDERS THAT YOU MIGHT NOT KNOW ABOUT...

These days we all try to do our bit and get recycling right, but we appreciate it's not always easy to do. Each day we receive everyday items at our recycling factories that cause problems. Typically, these items are:



Nappies and sanitary towels. These spoil good recycling, and all must be **hand removed** by staff members on site. All nappies whether they are used or not, cannot be recycled and must be put in the black rubbish bag.

Animal waste including cat litter, dog poo, hamster/gerbil bedding, etc. must be placed in the black bin bag, and not in the green garden bin.

Batteries can cause sparks and fires if they knock against factory machines. Never put them in your clear recycling sack. You can order a free yellow battery bag from our website.

Although made of paper, the fibres of tissues and kitchen towel are too weak to be recycled. Place in the black bin bag. Interestingly everyday paper can be recycled up to 5 or 6 times and it's last life is as tissue.

We get textiles, in fact a lot of them! We stopped accepting these in 2015. The textile industry wants the clothing to be clean and dry which cannot be guaranteed. Instead, take good quality old clothes to your local charity shop and place poor quality clothing in the black rubbish bag.

Want to learn more? Help us keep MK cleaner, greener and safer by checking how to recycle the right way on the website.

[WWW.MILTON-KEYNES.GOV.UK/RECYCLING](http://WWW.MILTON-KEYNES.GOV.UK/RECYCLING)

**MK Council is rolling out a new demand responsive transport system (DRT) as a more efficient, cleaner and greener way to get around the city.**

The new MK Connect service will start on 1 April. MK Connect Vehicles will pick up passengers from close to wherever they are within minutes of booking, and take them to their destination. Journeys are quick and easy to book via an app or over the phone. Journeys are not restricted to bus routes and are expected to be faster in most cases. Passengers should be collected and dropped off within 4,000m of their location and destination, although it is usually less.

The service is being run by Via and will replace the subsidised bus services currently paid for by MK Council because they are underused by customers. Commercial bus routes will continue to run. MK Council and Via are working together to promote the changes and show people how to use the new system.

Passengers using a wheelchair or who have a disability will be matched with a fully accessible vehicle, and the service is accessible to passengers with vision, hearing and other requirements.

Single journeys cost £3.50 during peak hours (7am-9am, 4.30pm-6.30pm) and £2.50 at all other times; less than equivalent journeys on the former bus routes. Concessionary bus passes and All in 1 Youth cards will be accepted as well as the MK move pay as you go purse.

For more information about MK Connect and how to download the app, please visit:

<https://ridewithvia.com/mk-connect>





## A MESSAGE FROM THE CHAIRMAN

Welcome to the Spring edition of the Fairfields Forum - signs of spring and new beginnings are on their way and we are all hoping for wider signs of recovery as the world starts to emerge from the darkness of COVID-19. In this edition you will find articles and updates on a range of topics.

Many of you will be looking forward to getting your key to the allotments - exciting times ahead for those of you that are first timers. We all look forward to seeing and hearing how you are getting on and the successes with your new plots.

Included in this newsletter are details of exciting plans announced by Milton Keynes Council for the construction of a new play area targeting the junior to teenage age groups which is scheduled for use by this autumn. Also, plans continue for us to build a community building for Fairfields - the plot has been found, plans drawn up and we're now awaiting the go ahead from

Milton Keynes Council. You can find more updates on the parish website - details in the contacts section.

The recent litter pick was a particular success and we are keen to arrange these on a more regular basis as the weather starts to improve.

As a reminder, we meet each month to discuss things that might affect Fairfields and would welcome anyone to join, submit questions and get involved. We cannot wait until we can all start to meet up again - it seems such a long time ago that we arranged a social and walked to the Shoulder of Mutton... fingers crossed this is not too far away!

*Simon Webb*

Cllr Simon Webb  
Chairman Fairfields Parish Council

## PARISH COUNCIL CONTACT

Parish Clerk, Mrs Jean Nicholas  
[fairfields.pc.clerk@gmail.com](mailto:fairfields.pc.clerk@gmail.com)

# PARISH COUNCIL PRECEPT UNCHANGED FOR 2021/2022



We are pleased to announce that the precept for Fairfields has remained at the same rate for a third year. We spend wisely to build our community and the precept remains in the lowest 10% of those levied by other parishes in Milton Keynes.

A "precept" is the money which we have notified Milton Keynes Council (MKC) is required to meet our budget for 2021/2022. It is collected by MKC with the Council Tax on behalf of the Parish Council and paid over to us in two instalments each year. The precept will be spent by the Parish Council on continuing our work in making Fairfields a community where people want to live.

Parish councils are non-profit making and precept money raised from our parish must be spent on the parish. We are governed by strict statutory rules in this respect.

In the past we have provided dog bins, a bus shelter, a speed indicator device, a play scheme in the summer school holidays and this newsletter.

We will continue to fund such items as are required to make this a great place to live.

*Mrs Jean Nicholas*  
Parish Clerk



## FAIRFIELDS PHOTO COMPETITION

Many thanks to all residents who entered their photos for our Winter Fairfields competition. Congratulations to our winner Shannen Richardson (spot the real cat). Look out for details of future competitions on the Fairfields Community Facebook Group.

*Mr Robin Burn*

**1<sup>ST</sup> PLACE**  
*Shannen Richardson*



**2<sup>ND</sup> PLACE**  
*Lola London*



**3<sup>RD</sup> PLACE**  
*Piyush Gupta*

## FAIRFIELDS SPORTS HUB OPENS!

Following many years of planning we are delighted to announce that the first phase of the new **Fairfields Sports Hub** was opened in November located adjacent to Fairfields Primary School.

The facilities are shared between the 3 Founder Member clubs. These are **MK Dons SET** (Sport & Education Trust), **Wolverton Tigermoths** and **Roman Rangers**. Wolverton Tigermoths and Roman Rangers recently announced that from September 2021 they will merge as a single club called **MK United**. The history of the clubs dates back almost 50 years to 1975 when Wolverton Tigermoths was first formed. Roman Rangers was formed in 2008 from its parent Wolverton Tigermoths. We are thrilled to be bringing the clubs back together to form MK United. Between us we provide football for children and youths age 6 to 18 years which include boys and girls alike. Current numbers are around 350 children from the local community, Many residing here in Fairfields.

In addition, we are also looking at branching into Mens and Womens football, a Vets team and a Walking Football team. The MK Dons SET are managing the facility on a day to day basis and are also responsible for all bookings for the site. The MK Dons SET are using the facility mainly to provide Womens and Girls football. There is a strong focus in providing opportunities for Women and Girls currently and the sport has become very popular ahead of the 2022 Euros which is being held in England including venues right here in Milton Keynes. **We will also be starting an over 30s womens team in the coming months.**

Phase One of the Fairfields project was the opening of a brand new state of the art 3G multi purpose football pitch which to date has

generally been used for training purposes with occasional matches having taken place. **From September 2021** the plan to have 4 further grass pitches available, 3 of these will be full size pitches and one 9v9 pitch. Also a new club house should open shortly thereafter. The new site will also facilitate its own car parking. Temporary parking is currently available via Fairfields Primary School. I'm sure you will agree that this is an exciting development for the local community.

If you are interested in taking part in football please contact **Dennis Knell** on **07725 500542** or **Gary Tinkler** on **07938 007040**.





# ALLOTMENT UPDATE

As at today 23<sup>rd</sup> February work on the allotments is going ahead despite the wet weather and COVID restrictions. We are informed by Milton Keynes Council that they are still expecting to handover both sites to us towards the end of March.

We do still have a couple of plots available on the site next to the school but the Marius Grove site is now fully occupied. By the time you read this we hope to have some firmer knowledge and we will update plot holders by email of the progress.

Once we have a handover date we will then have to get keys cut and arrange for the distribution of them to plot holders. This will be achieved in a way that conforms to the COVID regulation at that time.

*Mrs Jean Nicholas*  
Parish Clerk

## *Bacchus Lane* by Jenny Burn

Bacchus was the Roman god of wine and viticulture. In the Roman mythological traditions, his father was Jupiter. As the son of the mightiest of gods, Bacchus was directly related to many other Roman deities including Neptune, Ceres, Juno, Vesta and Pluto whilst his siblings included Mercury, Vulcan, Proserpina and Minerva.

The Bacchus myth says he was born twice, first to his sister Proserpina. After being killed in battle his scattered remains were gathered up by his father, Jupiter, and was reborn to Semele, his second mother.

The Roman version of Bacchus was always depicted as a young handsome beardless man, a lover of revelry, who induced altered states through wine and granted drunkenness to all who wished for it.

# ALLOTMENT GARDENING!

## SOIL PREPARATION AND SUCCESSION SOWING

Compost and fertilisers – The fertility of any soil is directly dependent on the feeding we undertake. I usually have plenty of nutrition ready to dig in from my compost bin, but if you don't have one, now is the time to think about it, as compost takes 6 – 9 months to form. Compost bins are available in all shapes and sizes, or you can improvise by cutting the bottom off an old dustbin. Your compost bin can include garden waste (leaves, grass clippings etc.) and kitchen waste such as fruit and vegetables, tea leaves and coffee grounds. Do not put fish, cheese and meat in the composter as they could introduce bacteria when compost is put on your soil and also don't put any weeds in, as they could produce seeds and this will be counterproductive when you use the compost. If you don't have your own compost chicken pellets and Growmore can be purchased quite reasonably. Do not fertilize soil where you are planning to grow parsnips and carrots as they do not grow well in rich soil (see photo).



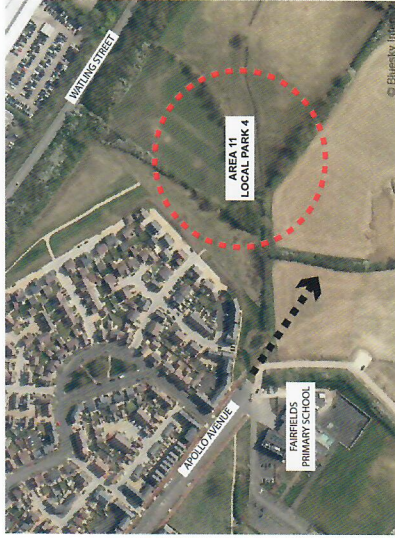
Succession sowing – If you want spring cabbages and purple sprouting broccoli or any other big brassicas next spring then the seeds need to be sown late spring this year. They will grow slowly all year but you need to be ahead with them. Plant them out 45–60 cm apart and you can still use the same bed for summer veg as you can fill in between with summer crops such as lettuces, beetroot, spring onions, radish and herbs. Once the summer crops are done clear away and this will leave room for the brassicas to grow on and give you a second season of veg from the same bed.

Sow the smaller crops in small quantities' at a time otherwise you will be unable to eat them all when they are at their best, packets of seed always have too much seed to sow at one time. For fast growing crops such as salads a sowing once a month works well. Sow half a row at a time. You will have one half row just sown, one half row that's growing and one you are harvesting and as soon as this harvest is clear make the next succession sowing. Plan to sow crops like chard, carrots, parsnips and dwarf French beans two or three times in succession from the end of April/early May through to the end of August. Other more exotic vegetables need careful nurturing but should not be sown until the soil warms up for summer.

*Mrs Jean Nicholas*  
Parish Clerk

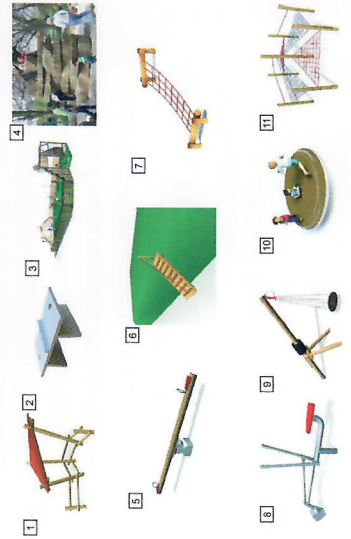
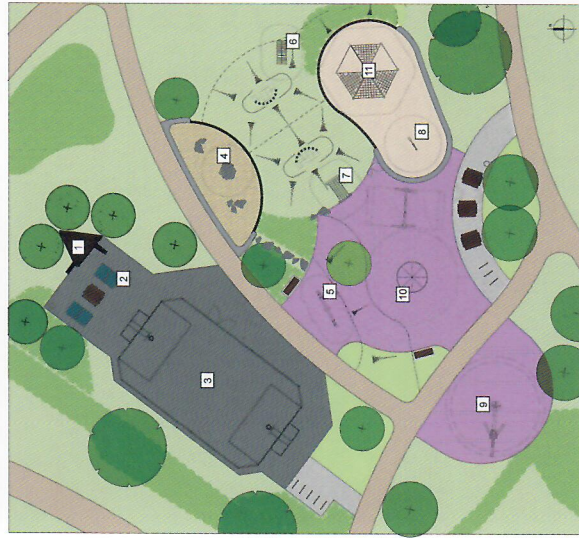


## FUTURE NEIGHBOURHOOD PLAY AREA 4



A new play area is to be constructed at Fairfields later this year. This will be a Neighbourhood Play area and targets the junior to teenage age groups. The Illustration below gives a feel for the type of facilities to be provided and includes a wide range of challenging play equipment, as well as a ball games area with goal wall, cycle/ wheeled sports track, trim trail and youth shelter, which can also serve as a meeting point for families. There are also new footpaths to connect the park with the adjoining streets and a number of seats, litter bins and picnic opportunities provided.

Over the coming months some advanced drainage and clearance works will be required before the play area construction can progress in earnest. The play area already has planning permission and so we are in the process of tendering the works in order to appoint a contractor with the aim of starting construction later in the Spring / early summer. We aim to have the play area completed ready for use by the Autumn 2021.



ilton keynes council

## SPEED INDICATOR DEVICE

In order to address the concern of vehicles speeding on Fairfields' roads the Parish Council purchased a speed indicator device in November last year. The device was first installed on Vespasiano Road facing the cars coming into the estate. Below are some statistics captured from the device since November.

- Average number of cars coming into the estate per day 2784
- Average speed of cars coming into the estate 27 miles/hour
- Busiest hours on Fairfields' roads 8am, 3pm and 5pm
- Busiest days on Fairfields' roads Thursday and Friday

The speed indicator device is solar powered and the idea is to move it around Fairfields' roads every few months wherever vehicles are speeding the most.

The Parish Council is also working with Barratts and Milton Keynes Council to improve Fairfields' roads and address the



*Mr Piyush Gupta*

The speed indicator device has now been moved to Cicero Crescent and if you have any suggestions as to where the device should next be moved or would like to share any concerns, please email the Parish Clerk at fairfields.pc.clerk@gmail.com.

other concerns raised by the residents like improper parking, road signs, pedestrian crossing etc.

## FREE PPE FOR CARERS

pass this information on to them. If they do not have an email address they can phone to place an order.



**Are you an unpaid carer who does not live with the person you care for?**

You can now receive free PPE from Milton Keynes Council. To place an order please email [ppe@milton-keynes.gov.uk](mailto:ppe@milton-keynes.gov.uk). You shall receive an automated email with an attached form and instructions on how to place an order.

If you would like to make an enquiry then you can email or call 07917 473993. If you know anyone who is an unpaid carer then please



# FAIRFIELDS WASTE SEWAGE DO'S & DON'TS

Blockages in pipes can be nasty and stops waste from leaving your property.

**You may have a blockage if:**

- You find it difficult to flush your toilet.
- Your sink or bath empties very slowly.
- You notice a bad smell coming from your drains.

When wastewater is unable to flow away it can come back up from the toilet or sink, flooding your home. It's easy to avoid blockages, just remember to bin any item that's not human waste, or toilet paper.

## What causes blockages?

Sewers are only designed to take water from your toilets, sinks, baths and showers along with human waste and toilet tissue. Everything else should be put in the bin.

**Blockages are normally caused by:**

- Fat, oil and food leftovers that solidifies in pipes.
- Wet wipes – even the ones labelled 'flushable' block your pipes.
- Sanitary items, including towels and tampons.



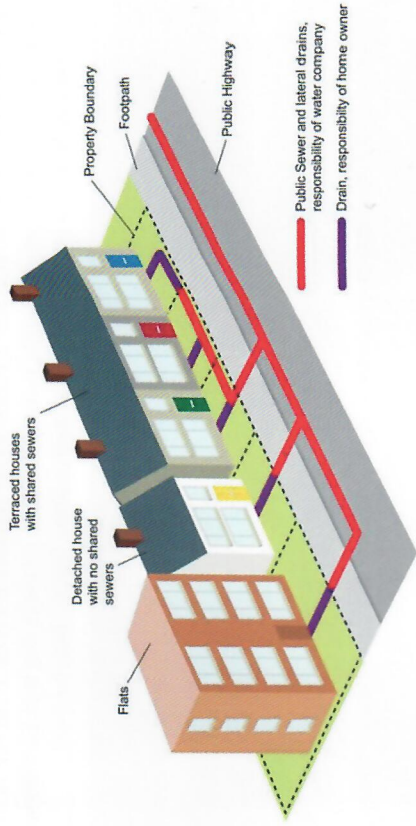
## How do I know if the blockage is in my home?

If the blockage is in your home, it's your responsibility to unblock it. These signs may indicate it's in your home:

- Your neighbours aren't experiencing problems with their drains.
- Your property doesn't share a drain with any other property.
- There's no other flooding in the local area.
- Your upstairs facilities are impacted but downstairs is working - this suggests an internal blockage.
- If you lift the manhole cover outside your property and the drain is clear, it's likely that suggesting the blockage is within your home.

## Who is responsible?

Anglian Water repair and clean the pipes that carry wastewater from your street to their treatment works. Property owners are responsible for the pipes in the homes and the ones connecting to their sewers.



## A blockage may be the property owner's responsibility if:

- Only one home is experiencing problems.
- The property doesn't share a drain with any other property.
- There is no other flooding in the local area.

## It may be the responsibility of Anglian Water if they have public sewers in the area and at least one of the following applies:

- The problem is outside your property boundary.
- More than one property is experiencing problems.

## Having problems?

If you think you have a blockage within your drains or sewer, we recommend you contact a plumber. Many home insurance providers or home protection includes drainage cover, so they may also be able to help.

If you think the blockage is in a section of pipework that's the responsibility of Anglian Water, please report it to them and they will send someone to look at it as soon as they can. If we investigate a blockage and it's in a section of pipework that's your responsibility, their engineer will discuss this with you.

**It's easy to avoid blockages in your home. Remember the three P's: pee, poo and paper – nothing else should be flushed!**

- Wrap sanitary items, nappies, wipes and condoms in toilet paper and put them in the bin.
- Leave leftover cooking oil, fat and food to cool and put it in the bin.
- Take chemicals, solvents, engine oil and paint to your local refuse or recycling site.
- Take medicines, tablets, syringes and needles to your pharmacist, hospital or health authority for safe disposal.

## What about blockages outside my home?

If you've spotted a drain that's leaking sewage outside and endangering wildlife or the environment, please call them on **03457 145 145** as soon as you can. They will ask you: what you saw, when you saw it, where you saw it and whether sewage is entering a river or any other watercourse.

When you call them, they will confirm who is responsible and let you know what the next steps are. If it's our responsibility, they will:

- Take immediate action to fix it. They will aim to do this within 48 hours.
- Investigate what's happened and why.
- Assess the impact on the environment.
- Share their findings with the Environment Agency, who look after all of England's waterways.
- Clean up and put a prevention plan in place.