

What goes where?

NEWS

Only these items for recycling...

- Mixed paper, magazines and envelopes
- Cardboard
- Food and drink cartons
- Drink cans
- Food tins
- Foil trays
- Empty aerosol spray cans
- Plastic bottles and lids
- Plastic food trays and pots

CLEAR SACKS

All other rubbish including...

- Disposable coffee cups
- Wet wipes
- Plastic film and cling film
- All tissues and kitchen towel
- Plastic carrier bags
- Broken glass (wrapped up)
- Dirty nappies and sanitary products
- Pet poo and bedding
- Clothes, bedding and other textiles
- Crisp, sweet & biscuit wrappers

BLUE BOX

- Glass bottles and jars (no lids)

GREEN BIN

- Fruit and Vegetables
- Any leftover food
- Teabags, tea leaves and coffee grounds
- Dairy products
- Meat, bones, fish - cooked or raw
- Bread and pastries
- Branches (less than 15cm diameter)
- Grass clippings
- Weeds

BLACK SACKS



Milton Keynes recycles

www.milton-keynes.gov.uk/recycling



Jan Hunt

Fairfields Parish Councillor

Now that we're starting to ease out of lockdown, we need to make sure that, as well as keeping ourselves safe, we're keeping our homes and neighbourhoods safe. More people out and about means burglary is expected to rise, according to the national Neighbourhood Watch Network, so we should try to be vigilant and review the steps we can take to avoid burglary such as window locks, interior lights on a timer, double door lock or deadlock and exterior lights on a sensor. You can also join the Fairfields Neighbourhood Watch scheme.

Could you help shape The future of Fairfields?

Do you want to make Fairfields a fantastic place to live for you and your family? Have you got some spare time to get involved liaising with interested parties and helping to make decisions on matters affecting Fairfields? If you are interested in learning more, please get in touch with our Parish Clerk to arrange a call and join our next meeting - usually the second Thursday of each month. fairfields.pc.clerk@gmail.com.

ISSUE 3 - AUTUMN 2020



FAIRFIELDS FORUM

PHOTO COMPETITION
1ST PLACE

Allan Smedmore

WWW.FAIRFIELDS-PC.ORG.UK

WWW.FAIRFIELDS-PC.ORG.UK

A MESSAGE FROM THE CHAIRMAN

Welcome to this edition of the Fairfields Forum – the newsletter from Fairfields Parish Council – letting you know what has been happening and what is planned for the future.

Since the edition we delivered in June, much has been happening around the area. The planning permission for the first set of allotments was approved and we expect work to start on these by the time you have received this newsletter – please keep an eye on the Parish Facebook page for updates. It is hoped that an Allotment Committee will be established in due course to help create an allotment community across Fairfields.

Meetings continue with Milton Keynes Council regarding the design and construction of a dedicated Community Building for Fairfields – more details about this can be found in the issue. This is an exciting project which will act as a focal point and allow clubs, societies and events to be held locally.

Whilst we still have no positive news to report regarding any timeline for the local centre and shops for Fairfields, it is something that we are continuing to

address with both Milton Keynes Council and the Developer.

I hope that many of you have been able to make use of the MK Play Association play days throughout August – these are funded by the Parish Council for your enjoyment – please let us know what you have enjoyed.

Two safety projects will be completed shortly. Firstly, an amendment to the road layout near the school to allow for safe crossing of Apollo Avenue – especially important for those walking to school. Secondly, a speed indication device has been purchased to be placed in areas where speeding might be an issue. This will act as a visual reminder to vehicles to keep within the speed limit.

Finally, if anyone is interested in joining the team and be part of an active group of people who are passionate about making Fairfields a fantastic place to live, please get in touch with our Clerk to hear more about becoming a Parish Councillor.

Simon Webb

Cllr Simon Webb
Chairman Fairfields Parish Council

PARISH COUNCIL CONTACT

Parish Clerk, Mrs Jean Nicholas
fairfields.pc.clerk@gmail.com

FAIRFIELDS PHOTO COMPETITION

Once again thanks to all who entered their photos for our latest Fairfields photo competition. Congratulations to our winner Allan Sneddon moving up from gaining 2nd place in our summer competition and whose photo is

also pride of place on our front cover. Next time we will be inviting entries for our winter edition of the newsletter so look out for details to be announced on the Fairfields Community Facebook Group.



2ND
PLACE

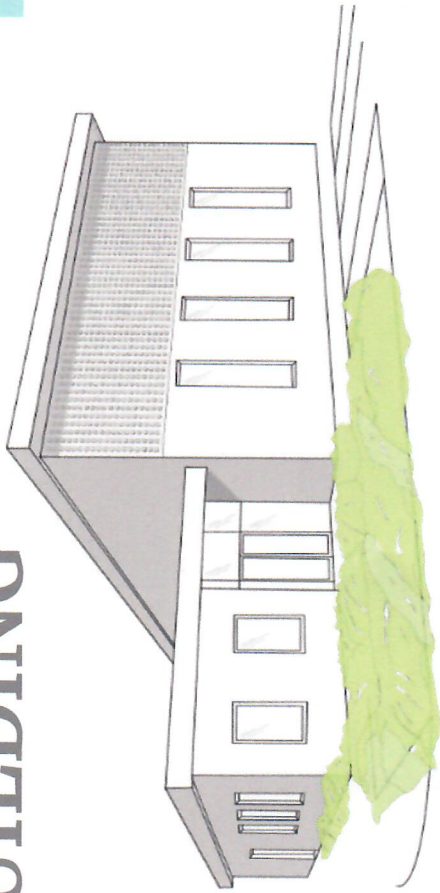
Gareth Clifford



3RD
PLACE

Jenny Bavin

FAIRFIELDS COMMUNITY BUILDING



Fairfields Parish Council has been working with Milton Keynes Council on the design for the Fairfields Community Building. The building will be a multi-use facility with a 180 square metre hall with storage space. The hall will open onto a secure fenced outside area, as well as having a fully functional kitchen

facility. There will also be meeting space available. The hall and meeting room will be available for hire by community groups and for private functions. The delivery schedule for the building is still to be confirmed, however we are expecting to get dates from Milton Keynes Council at the upcoming Parish Meetings.



Mark Ryan
Fairfields Parish
Councillor

BUS STOP SHELTER...

The Parish council is aware of how exposed the bus stop in Vespasian Road is to all weathers, so earlier this year we voted to provide a shelter at this site. The bus stop is temporary as eventually the bus will be re-routed through the development on Apollo Avenue. We have spent some time gaining approval and getting quotes for the shelter and the necessary groundworks to provide a temporary shelter and are pleased that this finally is coming to fruition. Very shortly work should begin on the groundworks necessary and we are hopeful that this facility for bus users will be in place before the winter. Once the bus route is changed we will restore

the area and use the shelter at our Community Centre site to be built beyond the primary school.



Mrs Jean Nicholas Parish Clerk

...FAIRFIELDS SPORTS HUB

It enables us as a Community Trust to provide more opportunities for local people to engage in a multitude of activity. Having a facility that has a primary aim of supporting the development of female football allows us to enrich and increase the provision we can offer to a wider audience.

With this facility being open to the community, it provides a unique scenario where there will be users who kick a ball for the very first time and England internationals playing at the same site."



The 2nd November is the highly anticipated date for the phase one opening of the Fairfields Sports Hub. Operated by Milton Keynes Dons Sports & Education Trust on behalf of Milton Keynes Council, Fairfields will become the home of the MK Dons Women & RTC (Girls academy) as well as two local community clubs. The facility will also act as a key strategic venue for the community with emphasis placed on the development and participation of females in sports and education.

When fully complete in the summer of 2021, Fairfields Sports Hub will play a pivotal role in the community through engagement in sports. The 3G Artificial Grass Pitch and the club house will be available for hire to support the needs of Milton Keynes.

Jack Sharp, Football Development Manager at MK Dons SET had the following to say. "Having Fairfields Sports Hub come online is a huge boost to the football landscape in Milton Keynes.

ONEMEDICAL GROUP WHITEHOUSE HEALTH CENTRE UPDATE

Following a drive from NHS Milton Keynes Clinical Commissioning Group and Milton Keynes Council to prioritise demand for further healthcare services, local residents can register their interest in becoming a patient at a brand-new purpose-built health centre in the city, which will be operated by national NHS healthcare provider, OneMedical Group.

A staggering 1,500 residents have already expressed interest in registering with the new centre, which is set to open in late 2020, after opening for pre-registration in August.

Located on the western edge of the city, the Whitehouse Health Centre will be providing GP and other primary care services for up to 22,500 people, with 11 consulting rooms and two treatment rooms. As well as providing general medical and wellbeing services to patients registered at the centre, other services will be available to the wider population of Milton Keynes such as primary care outpatient clinics, dermatology, gynaecology and minor surgery.

Ahead of the opening of Whitehouse Health Centre, OneMedical Group launched an art competition with two local primary schools. Inspired by the theme of 'community', children from Fairfields Primary School and Whitehouse Primary School submitted their fantastic entries to the competition at the end of the Summer Term. The winning pieces will be

selected by a panel of judges from OneMedical Group and the CCG and will be displayed in the new Whitehouse Health Centre for patients and staff to enjoy.

Patients can express their interest in registering at the new Whitehouse Health Centre by emailing the team on:

whitehousesurgery.mk@nhs.net

or ringing OneMedical Group's support centre on **0113 2843 158**.

Patients can also sign up to receive the latest information about the centre by visiting

www.facebook.com/Whitehouse-Health-Centre-100332778394917 where updates are shared on a regular basis.

OneMedicalGroup is a UK-based, family-owned health and wellbeing company. With over 15 years' experience in the NHS, it delivers NHS primary and urgent care services across 10 sites, to over 600,000 patient contacts a year.



**OneMedical
Group**

FAIRFIELDS SECOND ALLOTMENT!

The layout of the second site off Marius Grove at the north west edge of the development has been approved by the Parish Council and is now back with Milton Keynes Council (MKC) landscape architects to do further drawings and apply for planning permission. Once this is received MKC will send out tenders to contractors to work on the layout of the plots, grass paths between plots and any extra landscaping required. Prior to this, those on the waiting list will be contacted in submission order to accept an offer and pay their £50 refundable deposit. The timing on all of this has yet to be confirmed by MKC once planning permission is obtained.

Mrs Jean Nicholas
Parish Clerk



The second allotment site will be available in 2021. To register an interest and join the waiting list please visit:
fairfieldsgardens.co.uk/register-your-interest

Apollo Avenue by Jenny Burn

Fairfields main thoroughfare, when completed, will be Apollo Avenue. It will enter Fairfields at the northern end of Watling Street and meet Calverton Lane where it will join up with one of the main entrances to the Whitehouse development. Although primarily known as one of the original twelve most important Olympian Greek gods, the Romans adopted Apollo as one of their gods and kept his name. Apollo's Greek father, Zeus, along with all the other Greek gods, did not escape a name change – the Romans renamed him Jupiter. Apollo is depicted as a gentle god, usually a naked beardless youth, representing music, archery, truth, prophecy and healing, to name but a few of his many attributes. In BCE31 Roman Emperor, Augustus, promoted Apollo's worship and it is perhaps apt, therefore, that Fairfields "high street" is named for a mighty mythological entity.